

BT Receiver Installation Guide

1, Install BT receiver driver.

1.1 Let the BT receiver connect with PC, then double click the file 'setup.exe', as the figure1.

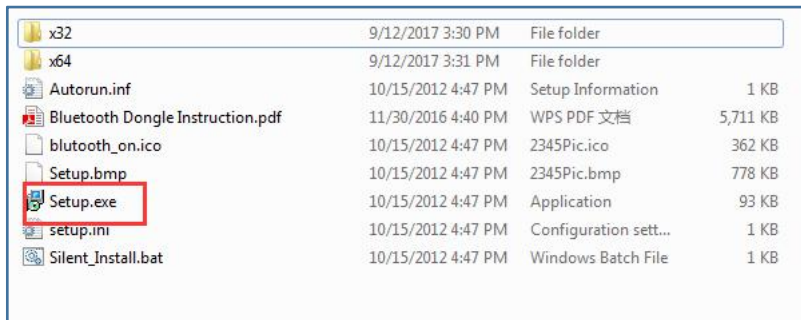


Figure1

1.2 Choose proper user interface language, and choose proper option, as the figure 3 to 5

Note: Please set this first two options as the figure 6.0, and set the third option according to your device, we suggest you choose the option 'PC/Desktop'.

If it is pop up the prompt message as the figure 8, it is means you install the BT receiver drive successfully.

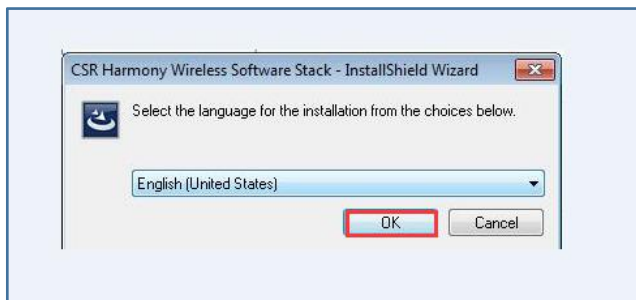


Figure 2



Figure 3



Figure 4

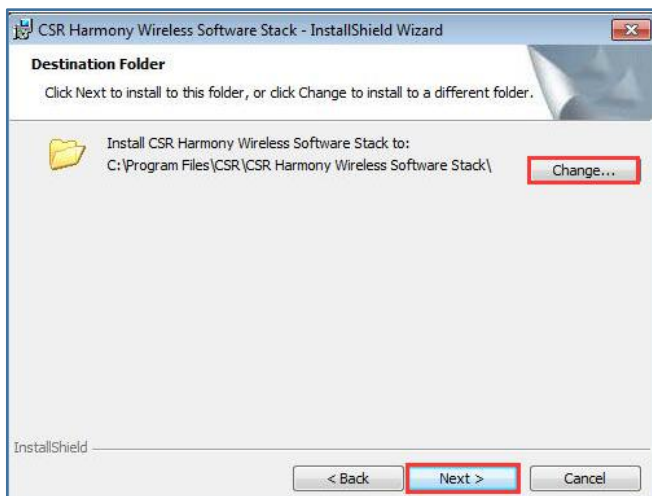


Figure5

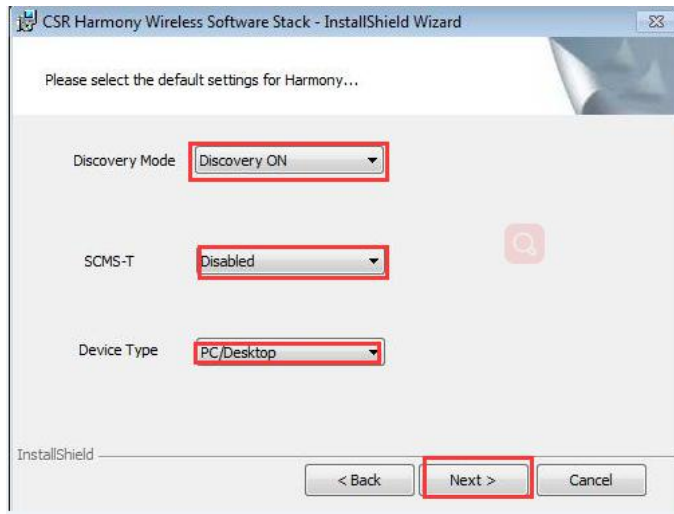


Figure 6



Figure 7

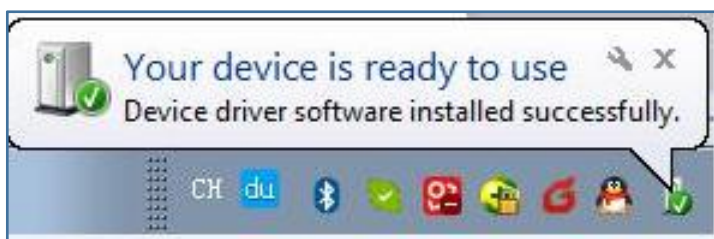


Figure 8

1.3 Right click the icon 'Bluetooth', and choose 'Add Bluetooth Device', then choose 'Keyboard/Mouse' as the figure 9.

Please scan the 'pairing bar code' or long press the scanning key about 10 seconds, then it will show up 'Bluetooth Barcode Scanner', and the LED of bar code scanner will flash quickly, as the figure 10. Right click the icon 'Bluetooth Barcode Scanner', and choose 'Properties'.

Please confirm you have chosen option 'Automatically accept connections from this device' and 'Display connection notification', and click icon 'Apply', then click icon 'OK', as the figure 11.

Finally click icon 'Next', as the figure 12, it will pop up the interface as figure 13, it means your bar code scanner have connected with PC with the BT Receiver.

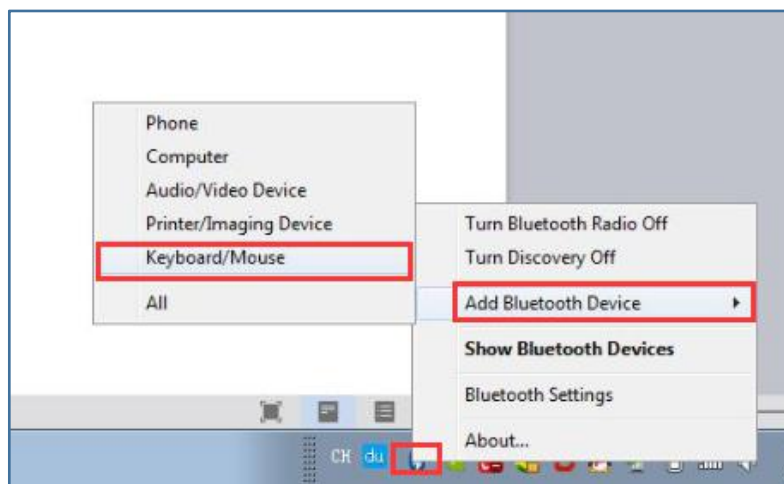


Figure 9

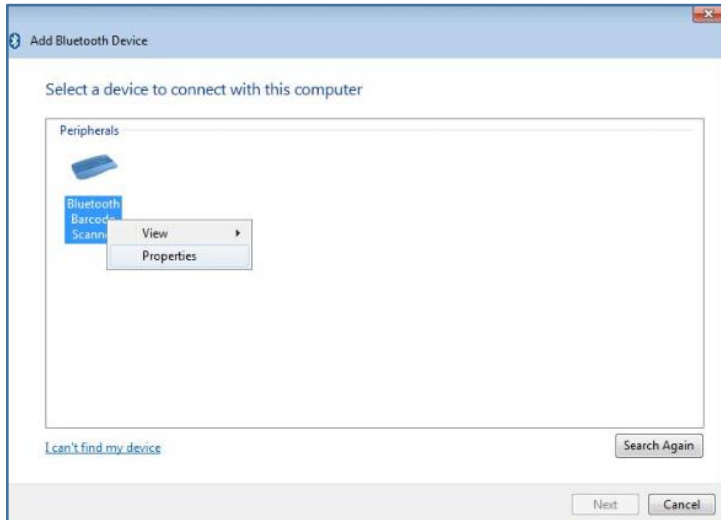


Figure10

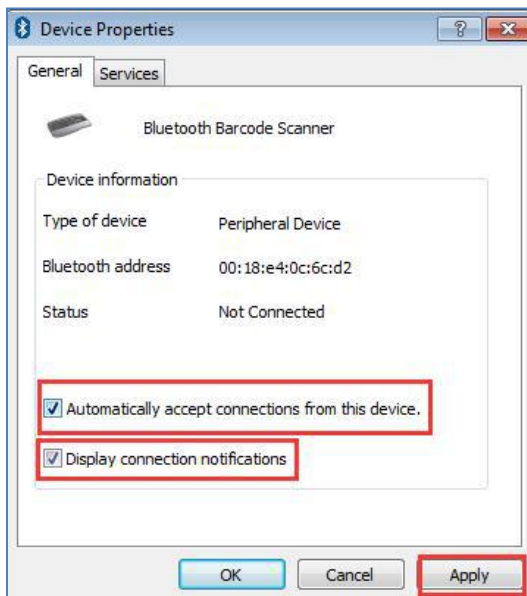


Figure11

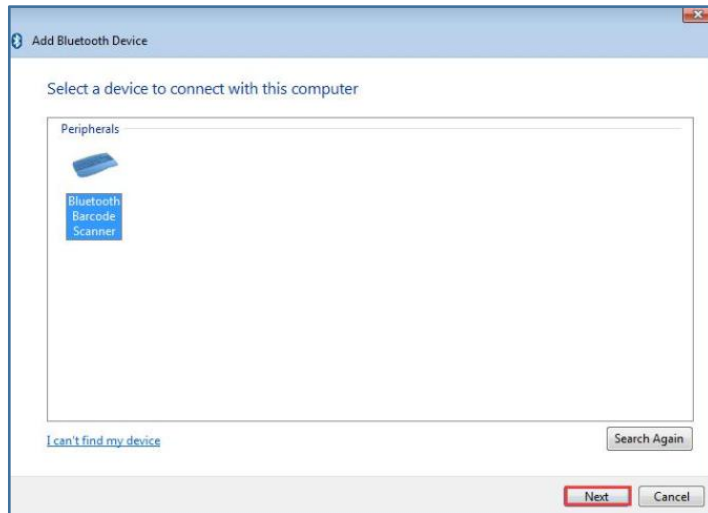


Figure12

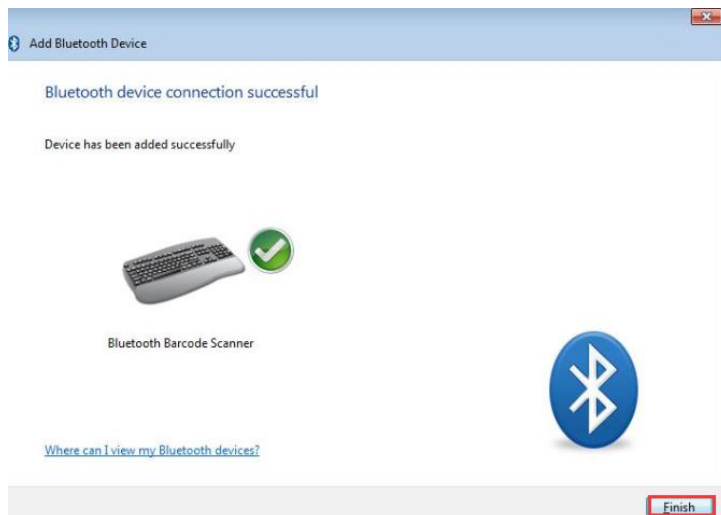


Figure 13

1.4 Open a Notebook or WPS file, and you can get related bar code data information, if not, please pull out the BT receiver, and reconnect with PC again, then pair with bar code scanner.

Because you have chosen option 'Automatically accept connections from this device', If the bar code scanner in the sleep mode, it will disconnect with BT receiver. It will trying to connect with BT receiver automatically when it wakes up. But whether can realize this function depend on your PC.

1.5 If your PC can't connect with barcode scanner when it is wake up, you have to pair manually, right click the icon 'Bluetooth', and choose option 'Bluetooth Settings', do not any operation, then click icon 'OK'. It will be connected again.
If you don't want to pair it manually usually, please set up sleep time.



Figure14



Figure15

1.6 If you have connected this BT receiver before, when you try to connect it again, you find you can't connect it. You have to delete the connection record as the figure 16, right

click the icon 'Bluetooth Barcode Scanner', and remove it, then you could pair it again.

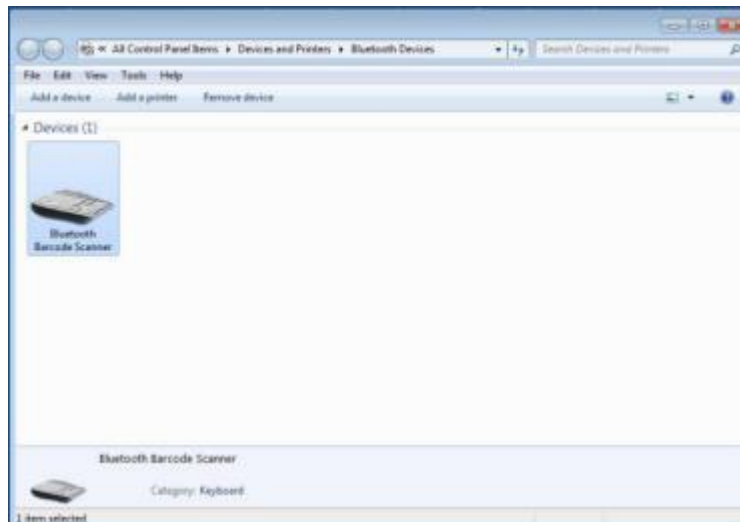


Figure 16

The End