

How to Change IP Address

Note: Please ensure the device already connect to the WiFi before you start to do following operations.

Step 1, Click the icon 'Windows', then choose option 'Settings' as the figure 1.0.



Figure 1.0

Step 2, please click icon 'Network and Dial-up Connections'. As the figure 2.0.



Figure 2.0

Step 3, please choose 'GARNETSDN1'. As the figure 3.0. It will pop up configuration windows as figure 4.0.

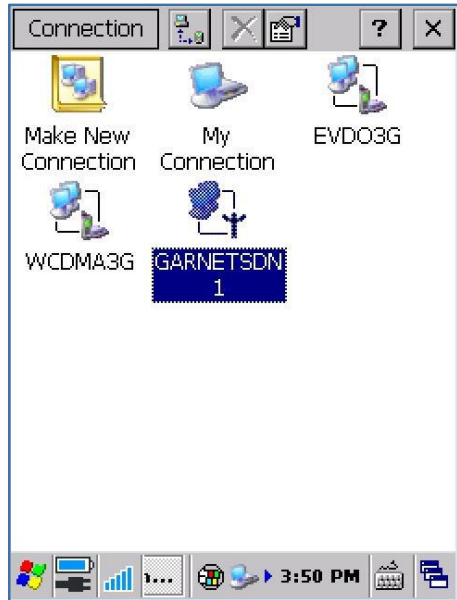


Figure 3.0

Step 4, please choose 'Specify an IP Address', and input relevant information in blank 'IP Address', 'Subnet Mask' and 'Default Gateway'. As the figure 4.0.

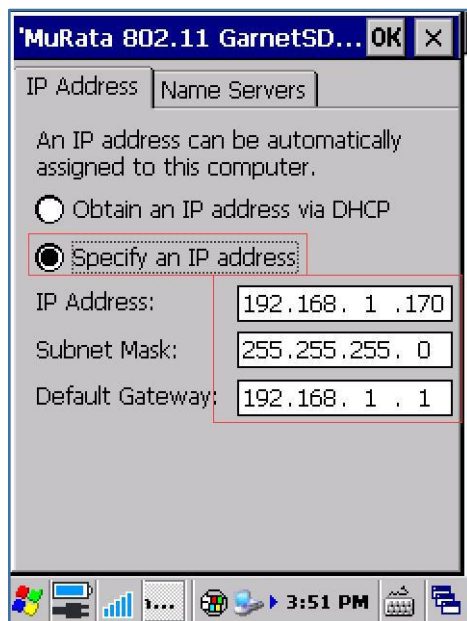


Figure 4.0

Step 5, please check whether you have changed the IP Address successfully or not, As the figure 5.0.

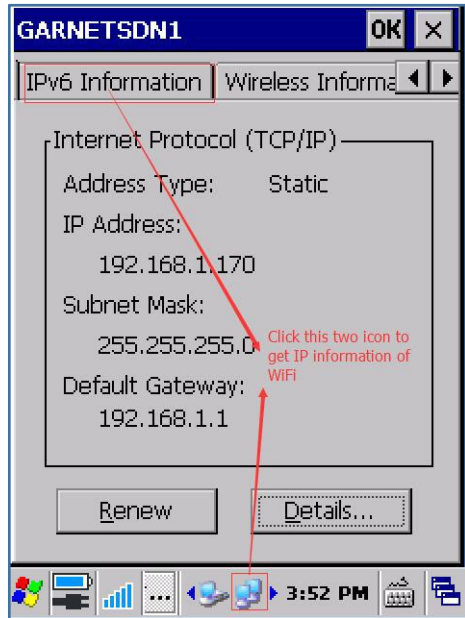


Figure 5.0

The End