

How to Configure WCDMA Network

Step 1, As the figure 1. Click the icon , then it will pop up the menu.





Figure 1



Figure 2

Step 2, As the figure 2. Click the icon 'Settings', it will pop up the menu, then please click the icon 'Network and Dial-up Connections'.

Step 3, As the figure 3, long press the icon , it will pop up the menu, then please click the icon 'Properties'. It will show the operating interface as figure 4, please click the icon 'Configure...'.


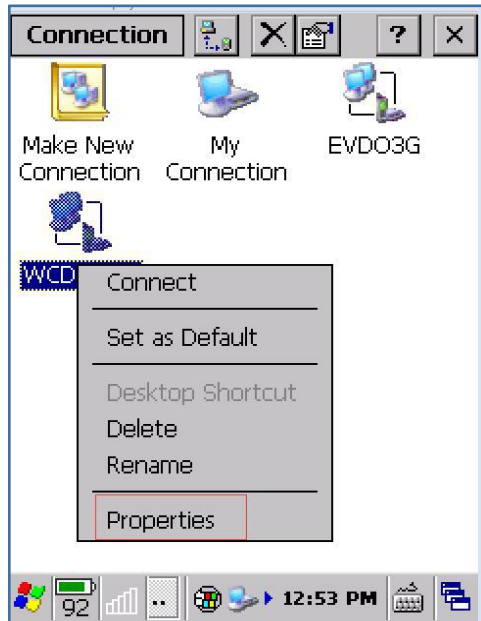


Figure 3



Figure 4

Step 4, As the figure 5, about the value of ‘Flow Control’, you can try set it as ‘None’, ‘Hardware’, or ‘Software’, the default value is ‘None’.

Then please click the icon ‘Call Options’. You will get the operating interface as figure 6, set the time of ‘Cancel the call if not connect within’ as you wanted, the default value is 5.

The blank in the bottom of this page, you have to fill in the value according to your WCDMA services provider , you can try fill in it with **+CGDCONT=1,"IP", "internet"** , **+CGDCONT=1,"IP", "emome"** , or **+CGDCONT=1,"IP", "fetnet01"**, if this three values doesn't work, you have to get related value from your WCDMA services provider, because every services provider adopt it's own unique value. Click icon ‘OK’ to make these configurations take effect.

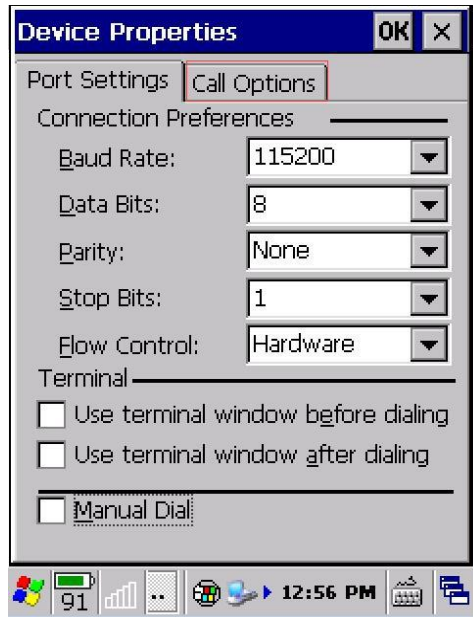


Figure 5

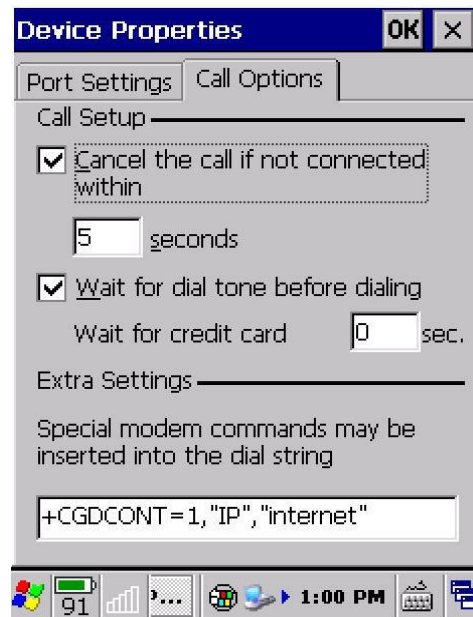


Figure 6

Step 5, Click the icon ‘OK’ in the figure 6, then you will get back to the main page as figure 4, please click the icon ‘Phone Number’ , you will get the operating interface as figure 7.

About the value of ‘Country/region code’, you have to fill in it according to your country code, such as China is 0086.

About the value of ‘Area code’, which is the area code of your local fixed telephones, such as the Beijing area code is 010, but we have to delete first number zero, and fill in 10. Click icon ‘OK’ to make these configurations take effect.

Note: you have to power off the device, then turn on the device to make all of configurations take effect.

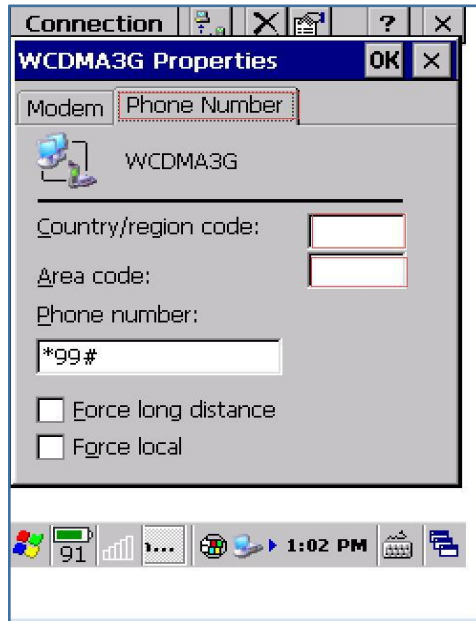


Figure 7

The End