

How to Install Arabic Inputting Software

Step1, As figure 1.0, Copy these software components to your device.

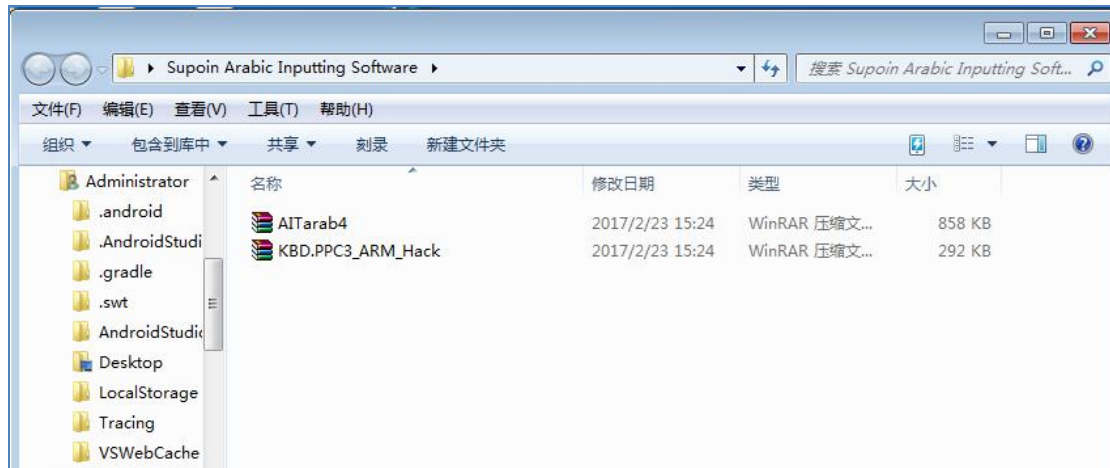


Figure 1.0

Step2, Install the AITarab4 as figure 2.0, 3.0 and 4.0.

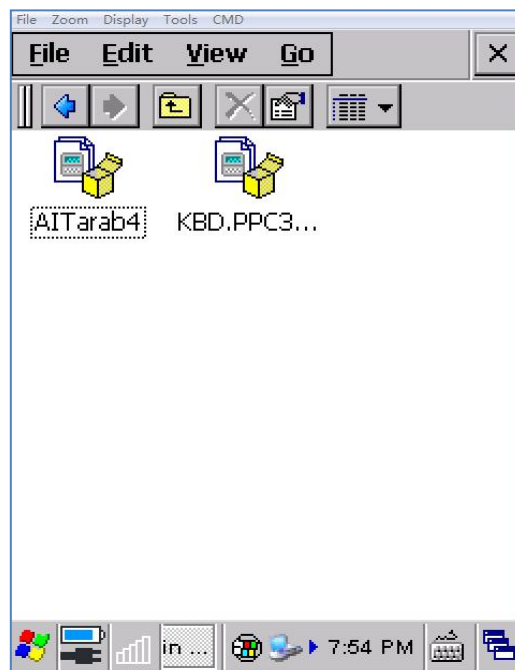


Figure 2.0



Figure 3.0

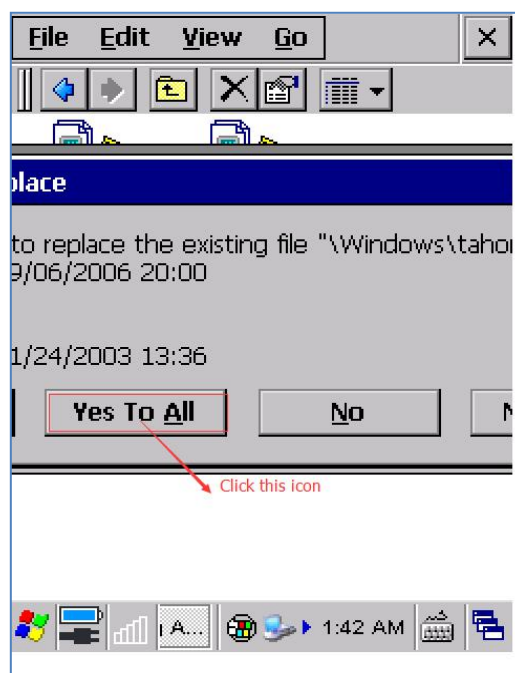


Figure 4.0

Step3 Install KBD.PPC3_ARM_Hack as figure 5.0.

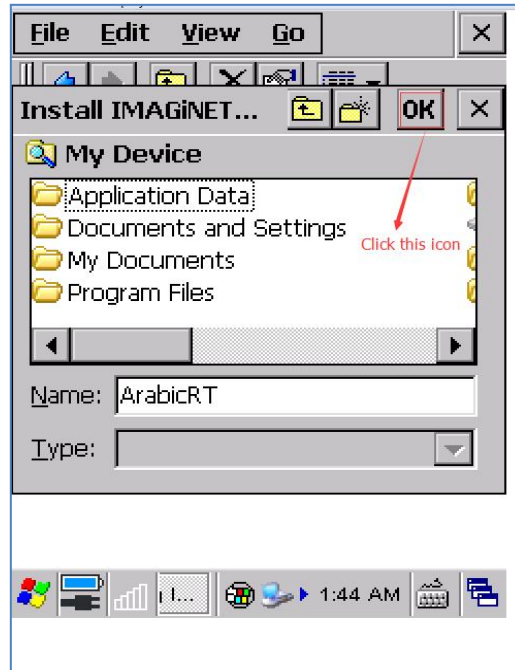


Figure 5.0

Step4 Set Inputting Mode as the Following Order



Figure 6.0

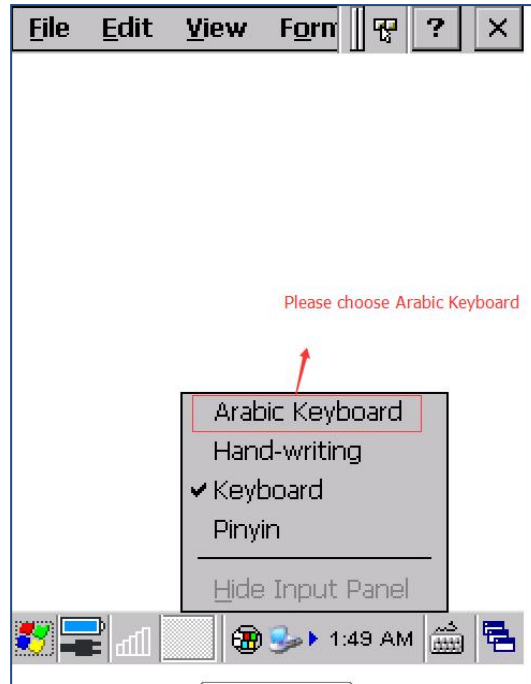


Figure 7.0

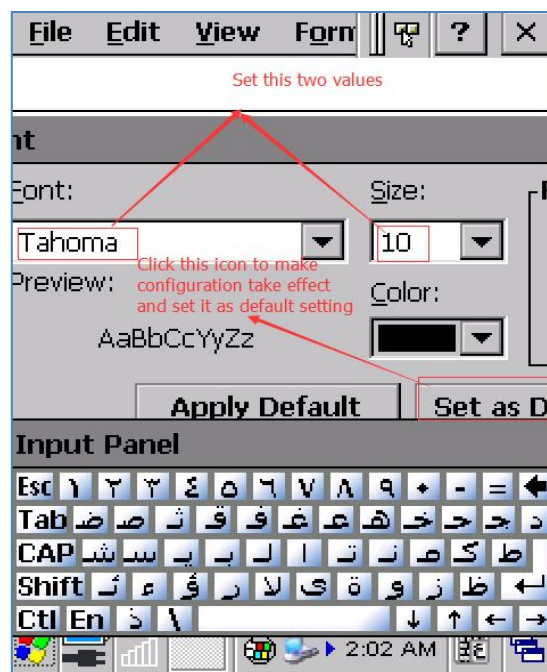


Figure 8.0

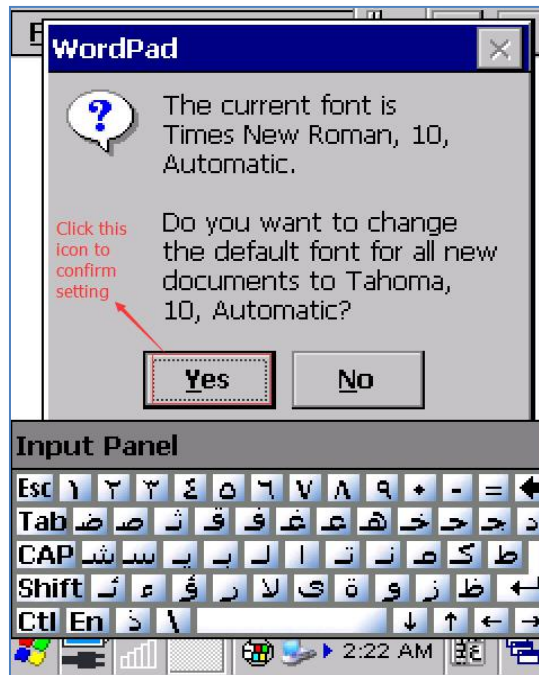


Figure 9.0

Step5 Set Arabic Regional Settings as following order



Figure 11.0

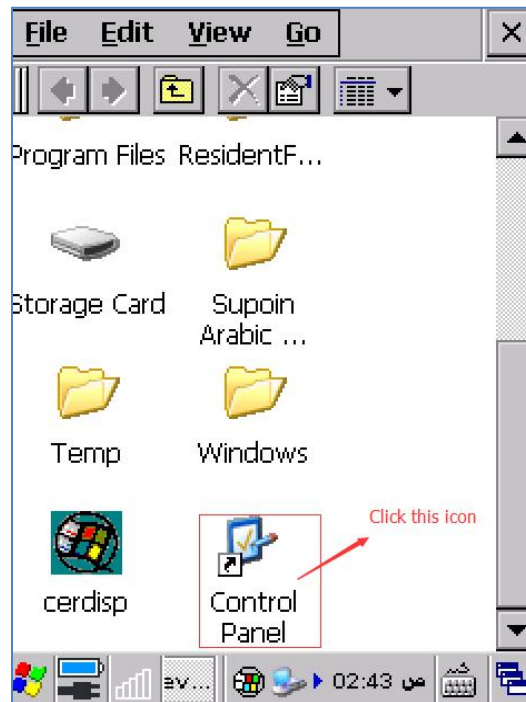


Figure 12.0

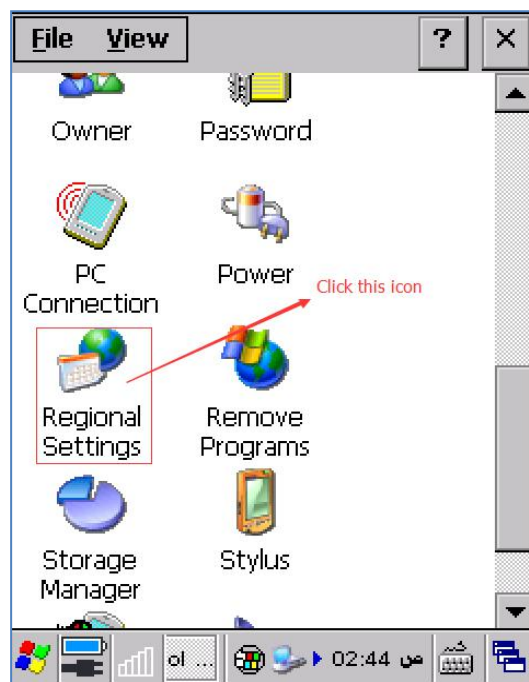


Figure 13.0

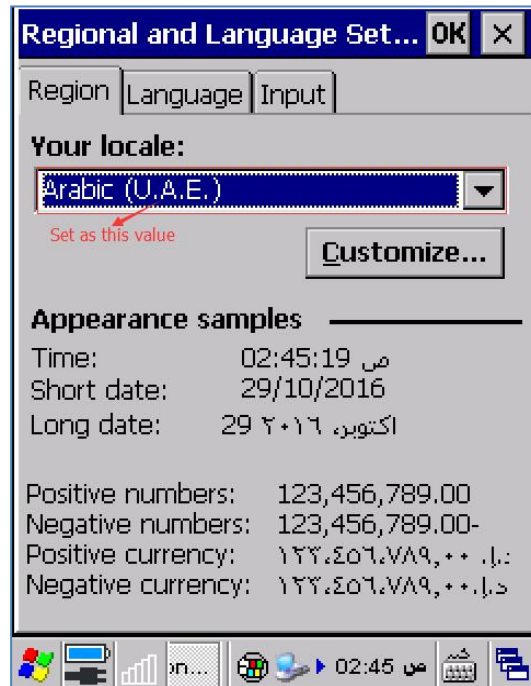


Figure 14.0

Step6, Reboot device to make all configurations take effect, then you can input Arabic characters as figure 15.0.

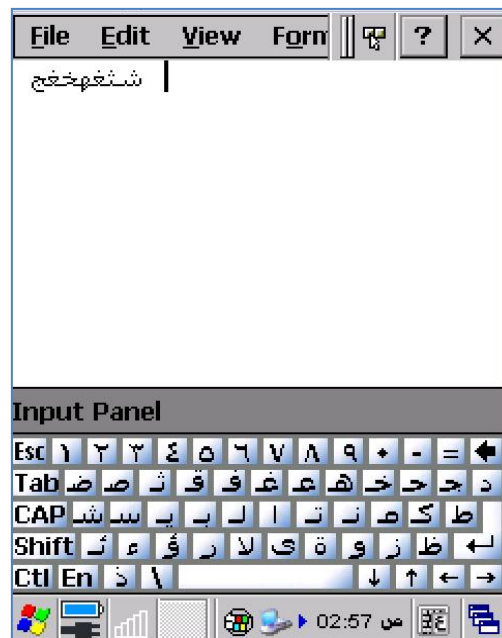


Figure 15.0

The End