

How to Update Firmware of MTK Device

Step 1 , Copy the file 'MTK-Firmware Update Tool' and related Firmware to you PC. Please read the file 'ReadMe.txt', before you install 'installdr64.exe' and 'InstallDriver.exe' in the file 'MTK USB Driver_v1.0948.0'. As the figure 1.0, 2.0 and 3.0.

名称	修改日期	类型	大小
MTK USB Driver_v1.0948.0	2017/6/8 11:37	文件夹	
SP_Flash_Tool_exe_Windows_v5.1516...	2017/6/8 11:37	文件夹	
MTK USB Driver_v1.0948.0.rar	2017/3/20 10:54	WinRAR 压缩文...	216 KB
SP_Flash_Tool_exe_Windows_v5.1516...	2017/3/20 10:54	WinRAR ZIP 压缩...	40,743 KB

Figure 1.0

名称	修改日期	类型	大小
2K_XP_COM	2017/6/8 11:37	文件夹	
98_Mass	2017/6/8 11:37	文件夹	
98ME_COM	2017/6/8 11:37	文件夹	
Vista_Win7	2017/6/8 11:37	文件夹	
InstallDriver.exe	2017/3/20 10:54	应用程序	328 KB
installdr64.exe	2017/3/20 10:54	应用程序	33 KB
lpk.dll	2017/3/20 10:54	快捷方式	3 KB
ReadMe.txt	2017/3/20 10:54	TXT 文件	2 KB

Figure 2.0

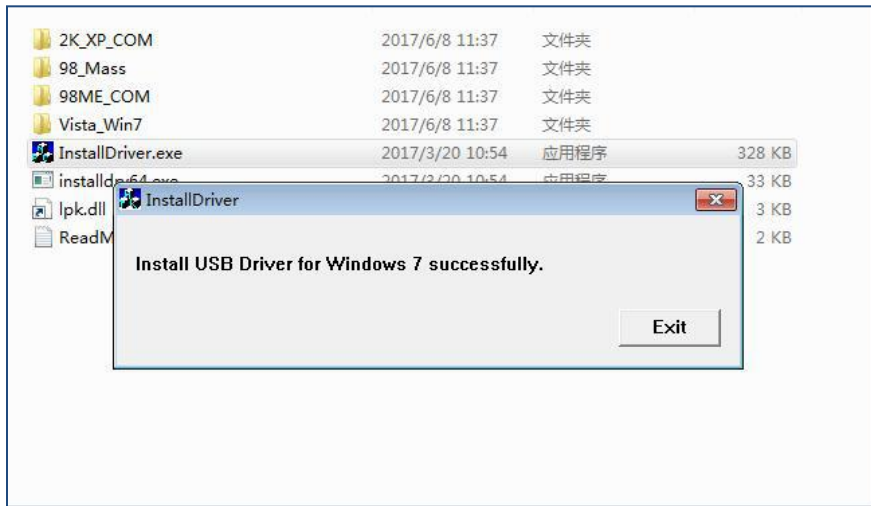


Figure 3.0

Step 2, Run the 'flash_tool.exe' in the file 'SP_Flash_Tool_exe_Windows_v5.1516.00' as the figure 4.0 , then it will pop-up the window as the figure 5.0.

Note: Don't change the value in the blank of 'Download-Agent'.

You need to click icon 'Scatter-loading' to choose file 'MT6582_Android_scatter.txt' as the figure 6.0. Please open file 'Firmware', find the file 'DOWNLOAD', you will find the file 'MT6582_Android_scatter.txt' as the figure 7.0.

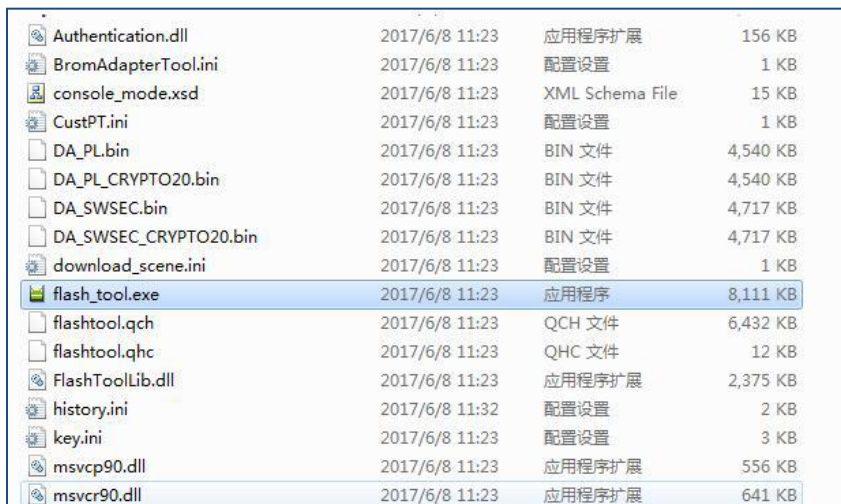


Figure 4.0

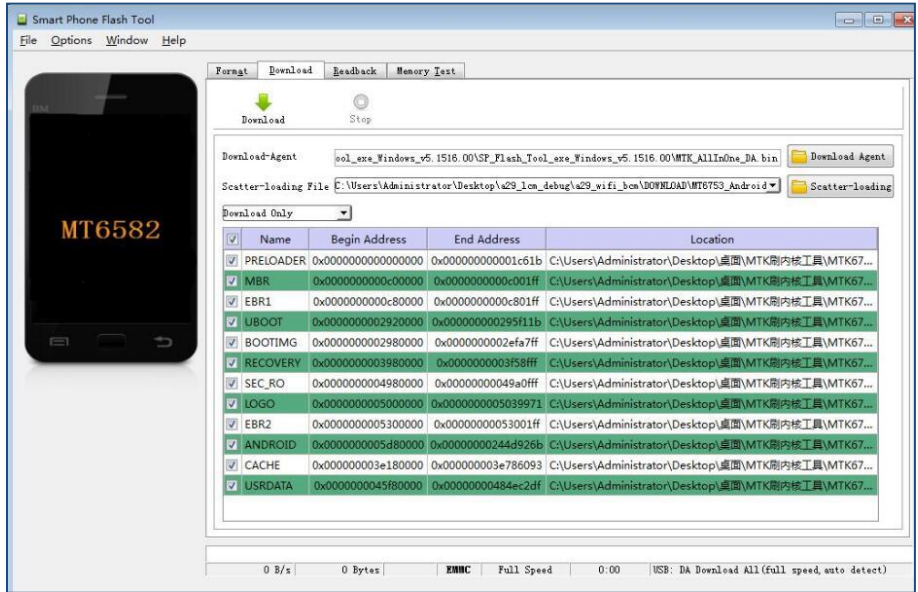


Figure 5.0

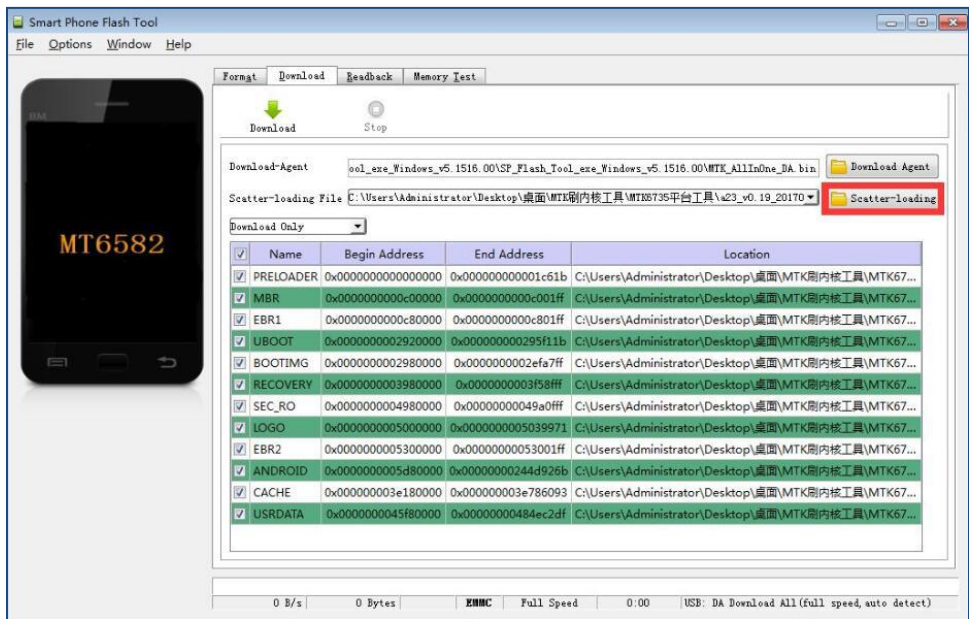


Figure 6.0

custom_build_verno	2017/6/8 11:08	文件	1 KB
EBR1	2017/6/8 11:08	文件	1 KB
EBR2	2017/6/8 11:08	文件	1 KB
installed-files.txt	2017/6/8 11:08	TXT 文件	82 KB
kernel	2017/6/8 11:08	文件	4,795 KB
kernel_gioneely82_wet_kk.bin	2017/6/8 11:08	BIN 文件	4,795 KB
lk.bin	2017/6/8 11:08	BIN 文件	253 KB
logo.bin	2017/6/8 11:08	BIN 文件	231 KB
MBR	2017/6/8 11:08	文件	1 KB
MT6582_Android_scatter.txt	2017/6/8 11:08	TXT 文件	8 KB
preloader_gioneely82_wet_kk.bin	2017/6/8 11:08	BIN 文件	114 KB
ramdisk.img	2017/6/8 11:08	光盘映像文件	812 KB
ramdisk-recovery.img	2017/6/8 11:08	光盘映像文件	1,189 KB
recovery.img	2017/6/8 11:08	光盘映像文件	5,988 KB
secro.img	2017/6/8 11:08	光盘映像文件	132 KB
system.img	2017/6/8 11:09	光盘映像文件	499,045 KB
userdata.img	2017/6/8 11:09	光盘映像文件	38,321 KB

Figure 7.0

Step 3, **Turn off the device**, and connect to PC with USB cable, then choose 'Firmware Update', finally click the icon 'Download', as the figure 8.0. The device will start to download firmware, you can read the 'download progress bar' in the bottom of interface. When it finished, it will pop-up the message 'Download OK' as the figure 9.0. Finally, turn on the device manually.

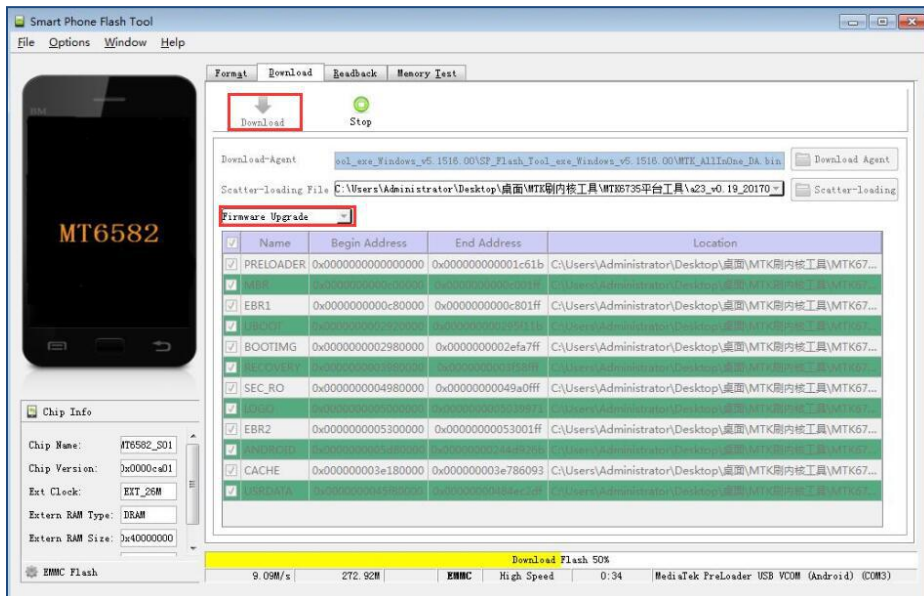


Figure 8.0

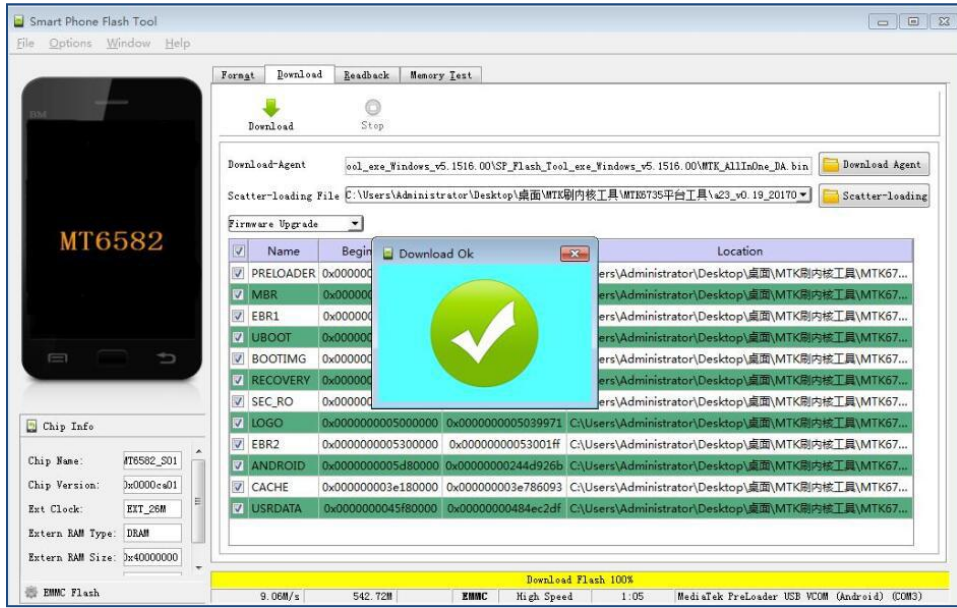


Figure 9.0

The End